

# Bass Strait Islands

**3 days, ex Adelaide & Melbourne**

2011: **Dec 2**

2012: **Jan 13**, Feb 17, Mar 10

ex **Sydney** 2011: **Dec 9**

2012: Mar 23, Apr 20

ex **Brisbane** 2011: **Nov 18**

2012: Feb 24, Apr 13

## Fully Inclusive Fares

ex Melbourne	\$2,495 p.p.t.s.
	depart 9:30 a.m.; return 5:30 p.m.
ex Adelaide	\$2,595 p.p.t.s.
	depart 6:30 a.m.; return 7:15 p.m.
ex Sydney	\$2,695 p.p.t.s.
	depart 9:15 a.m.; return 8:00 p.m.
ex Brisbane	\$2,795 p.p.t.s.
	depart 7:00 a.m.; return 8:45 p.m.
Single supplement:	\$ 200 s.s.

*Deposit of \$250 (non refundable) within 7 days of booking. Balance due 45 days prior to departure.*

*Fares shown fully inclusive as per itinerary.*

**Travel ex Brisbane Nov 18 - SAVE \$250**

**Travel ex Sydney Dec 9 - SAVE \$250**

**Travel ex Adelaide/Melbourne Dec 2 or  
Jan 13 - SAVE \$150**

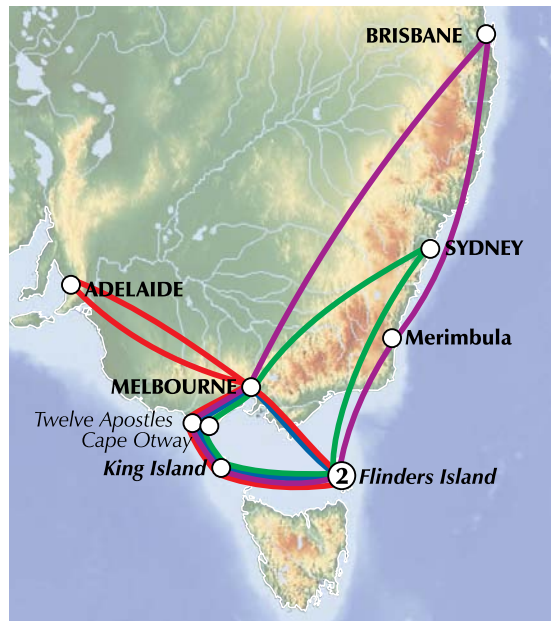


## EARLY BIRD SAVINGS

**Book and Pay in full any  
departure Feb to Apr 2012**

**SAVE \$200**

Offer closes Oct 31.



**Flinders Island** is the largest island in the Furneaux groups of islands, undulating and mountainous terrain, 64 kilometres in length and up to 29 kilometres wide, with a current population of under 1,000 persons. It was probably part of a land bridge joining Tasmania to the mainland prior to the forming of Bass Strait following the last ice age. In 1798 George Bass and Matthew Flinders circumnavigated Van Diemen's Land (now Tasmania) which led to the naming by Governor King of Bass Strait and Flinders Island.

The first European settlers were sealers, as was the case on King Island, which is approximately the same size as its eastern sister. Wybalenna on Flinders Island was chosen as the "safe house" for all Tasmanian aboriginals, a disastrous plan which was later abandoned. Gradually grazing leases were established and wool, fat lambs and beef

industries were established, and in 1888 George Boyes became the first permanent European settler. Agriculture was again boosted with the soldier settlement schemes of the 1950's. A fish processing company was also established in the 1970's. The harvesting of mutton birds has also been important to the island economy. Today tourism is of growing economic importance as a wide variety of visitors explore the island by coach, car, bicycle and on foot.

Both islands offer an unhurried friendly life style, excellent food, first class natural attractions – a photographer's delight.

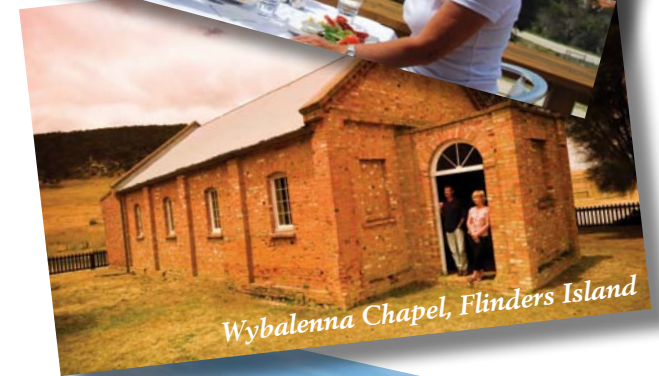
**King Island**, discovered in 1798 and named after Governor King (NSW), is on the western edge of Bass Strait. King Island has more than twice as many residents as Flinders Island. Like Flinders Island, it also features magnificent rocky seascapes. Much of its land area has been developed for farming, used in particular for dairy farming, the source of milk used by the King Island Dairy Company in making its now famous range of cheeses. The main township on the island is Currie, centre for all island services. The kelp industry is also important. Storm cast bull kelp (seaweed) is collected and transported to Currie, where it is air dried on racks, milled into granules and exported to Scotland for extraction of many types of alginate (gelling and stabilising properties useful in manufacturing of many products including cosmetics, toothpastes, ice cream and even beer). King Island is also famous for its crayfish, and we enjoy a delightful crayfish lunch during our visit.

The AAH Bass Strait Islands short break is a great opportunity to visit another "off the beaten track" part of Australia.

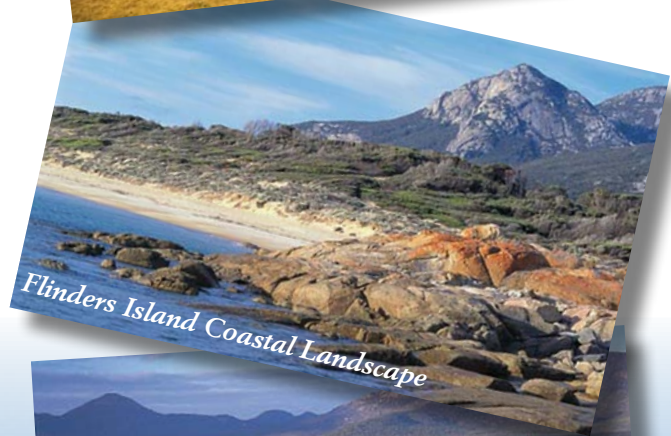
### *Marshall Bay, Flinders Island*



*Crayfish Lunch*



*Wybalenna Chapel, Flinders Island*



*Flinders Island Coastal Landscape*



*Flinders Island*



*Furneaux Museum, Flinders Island*

# Bass Strait Islands

## Day 1 (L,D) HOME, FLINDERS ISLAND

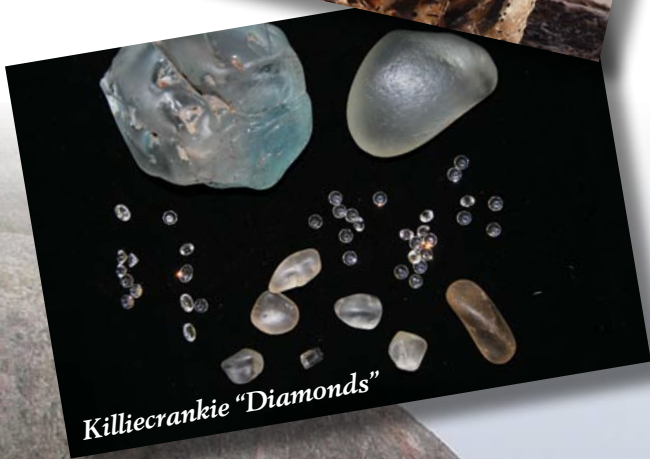
Meeting at the designated AAH departure lounge for departures from Brisbane, Sydney, Melbourne and Adelaide, we board our comfort plus Fokker 50 charter aircraft for our flight to Flinders Island. Morning refreshments are served by the cabin crew as we fly. Brisbane departures enjoy lunch at Merrimbula on the NSW south coast while we refuel. As we approach Flinders Island we descend to fly "low and slow" over Stanley Point and lighthouse, Killiecrankie and along the spectacular west coast to the main town on Flinders Island. We are welcomed by our local guides who over the next two days join us for a delightful journey of scenic exploration of the island. We visit nearby Trousers Point with its spectacular orange lichen-covered rocks prior to lunch at Vistas (Brisbane passengers arrive after lunch) and, after a short tour of the town of Whitemark, with time to stroll in the village and enjoy an afternoon cuppa, we head south to the village of Lady Barron and nearby Yellow Beach. Some time to explore this pristine coastal reserve before continuing to our home for two nights. Accommodation on Flinders Island is somewhat limited but in providing comfortable "country" accommodation, Australian Air Holidays chooses either ensuited rooms at the 1911 Whitemark Interstate Hotel, modern ensuited cabin style rooms at Lady Barron Tavern at Furneaux or nearby fully equipped holiday house/cottages accommodation. Dinner tonight at Furneaux Tavern or the Interstate Hotel.



King Island Dairy



Kelp Drying, King Island



Killiecrankie "Diamonds"

## Day 2 (B,L,D) FLINDERS ISLAND

Following a hearty breakfast we visit Emita and Port Davies, safe, sheltered swimming beaches on route to Wybalenna, site of the settlement of the Tasmanian Aboriginal settlement between 1833 and 1847, when all Tasmanian aboriginals were moved to this site. Illness and home sickness caused the tragic loss of most inhabitants. Later the few remaining Aborigines moved to Oyster Cove in southern Tasmania. The chapel, restored by the National Trust, is the only remaining building. Our guide will briefly give some details of this tragedy. Morning cuppa today at Allports Beach before visiting the Furneaux Museum. Today we enjoy a picnic lunch (weather permitting) at the beach at Killiecrankie, home of Killiecrankie "diamonds", a form of white topaz. You may find an attractive "diamond" on the beach. During the afternoon we journey to the northern part of the island to visit Palana, where evidence of WWII surveillance is still visible, North East River and the beautiful Sawyers Beach. Enjoy afternoon cuppa at Sawyers Beach as we return to our accommodation and dinner.

## Day 3 (B,L) FLINDERS ISLAND, KING ISLAND, HOME

Following breakfast we return to the airport where our Fokker 50 awaits for the flight of approximately 1 hour to King Island. We depart Flinders Island for King Island flying over Franklin Sound and Cape Barron Island, location of the first settlement south of Sydney. On a clear day, view the wreck of the *Farsund* in Franklin Pass on route to King Island, famous for beef and cheese and a favourite fishing destination. We land close to Currie, the main town, where our local guide and coach awaits. A short introductory tour of the township of Currie, home to an usually high steel lighthouse

prefabricated in England in 312 pieces and completed in four years in 1879. A highlight of the weekend is a King Island crayfish lunch (alternatives available). During the afternoon we learn a little of the kelp industry, spend some time browsing in the town, visit the award-winning King Island Dairy – taste the large variety of tempting cheeses, purchase if you wish. Afternoon tea at beautiful Portside Links, view their newly established gallery, the property the former Grassy Golf Course, which closed following the closure of the Scheelite mining operations at Grassy in 1990.

We rejoin our aircraft for the return journey, flying low to Cape Wickham, with its famous lighthouse, 52 metres high, completed in 1861 after the loss of 400 lives on the *Cataragui* which followed the loss of convict women and children on the *Neva*. We cross Bass Strait detouring to see the spectacular Twelve Apostles and Cape Otway Lighthouse, making a double pass so passengers on both sides of the aircraft can enjoy this iconic landmark. Enjoy drinks from the bar as we fly. We land at Essendon Airport and, following a quick refuelling, our flight continues to Adelaide, Sydney or Brisbane to conclude a first class weekend in the less visited Bass Strait Islands.



Cape Wickham Lighthouse



Boathouse, King Island

Allports Beach, Flinders Island